

MEDICAL OFFICE FOR LEASE



100 TOWN CENTER SOUTH ROAD
MOORESVILLE, IN 46158

RENTAL RATE: \$15/SF - NNN

Lease Space Available at 100 Town Center, Mooresville, IN

Looking for the perfect location for your medical or professional practice? 100 Town Center offers premier office spaces designed to meet the needs of healthcare providers and professionals. Conveniently located in the heart of Mooresville, this medical office building provides an ideal environment to grow your practice and serve the community.

Building Highlights

- Proximity to Major Healthcare Facilities: Located just minutes from Franciscan Health Mooresville, a leading hospital offering a full range of medical services, including emergency care, surgery, and specialized treatment centers. This ensures convenience for both your staff and patients and facilitates collaboration with nearby healthcare professionals.
- Prime Location: Situated just off State Road 67 with easy access for patients and clients.
- Zoning: HD2
- Professional Atmosphere: Medical-focused building designed to support healthcare professionals and their teams.
- Ample Parking: Convenient parking options for staff and patients.
- Flexible Use: Spaces can accommodate various medical or professional services with customization options available.



We obtained the information above from sources we believe to be reliable. However, we have not verified its accuracy and make no guarantee, warranty or representation about it. It is submitted subject to the possibility of errors, omissions, change of price, rental or other conditions, prior sale, lease or financing, or withdrawal without notice. We include projections, opinions, assumptions or estimates for example only, and they may not represent current or future performance of the property. You and your tax and legal advisors should conduct your own investigation of the property and transaction.



TERESA HARWOOD, CCIM

Cell: 317.354.5236
tharwood@kw.com

MORGAN MATHAUER

Office: 317.455.8111
Cell: 765.318.8053
mmathauer@kw.com

48 N Emerson Avenue, STE 300,
Greenwood, IN 46143 - United States
www.harwoodcommercialgroup.com

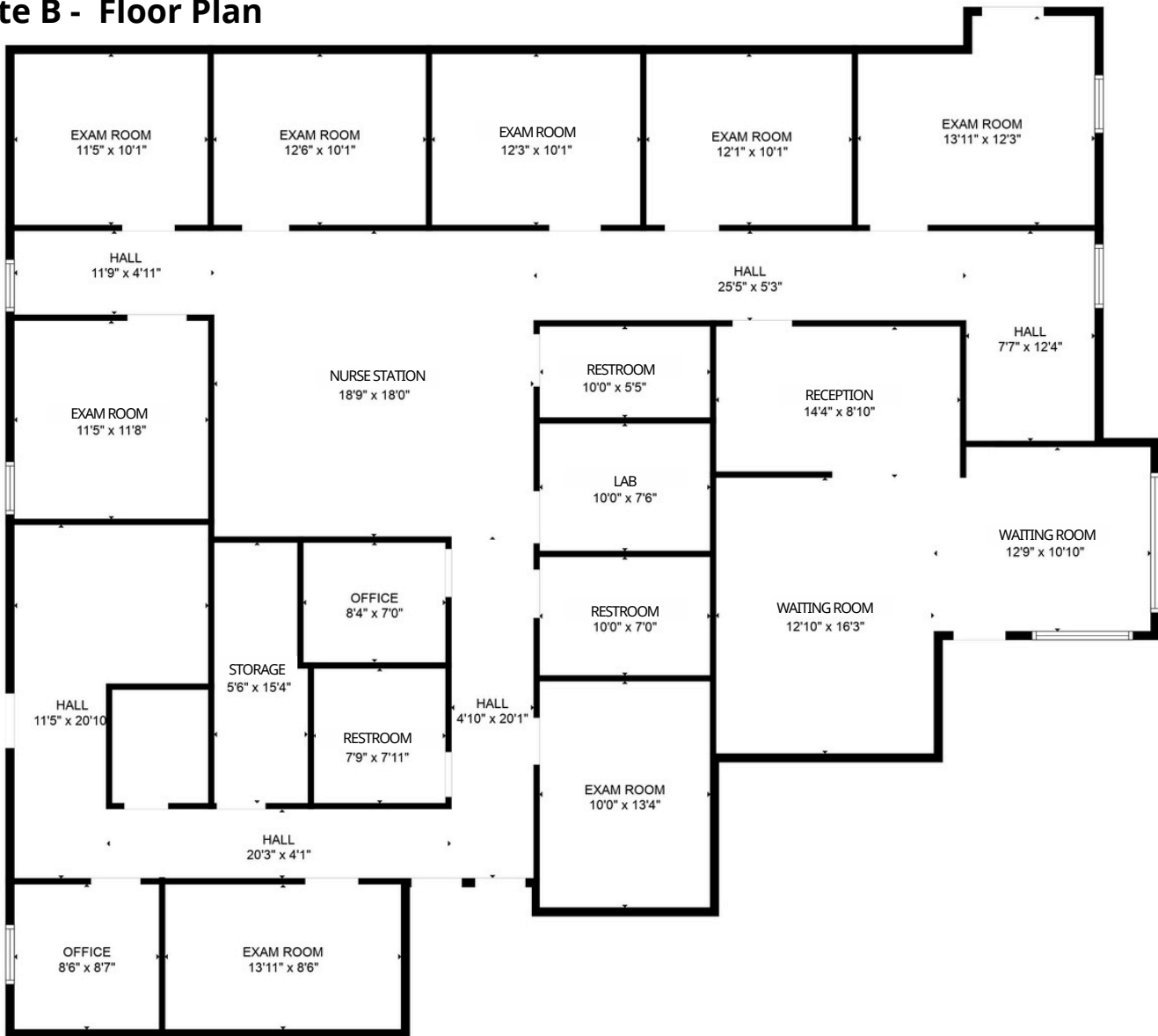


Suite B

- Size: 3,274 sq. ft.
- Rate: \$15/sq. ft.
- Features: Currently configured as a gynecology office, this spacious suite includes a flexible layout ideal for larger practices. The setup includes multiple exam rooms, a waiting area, and private offices.



Suite B - Floor Plan



We obtained the information above from sources we believe to be reliable. However, we have not verified its accuracy and make no guarantee, warranty or representation about it. It is submitted subject to the possibility of errors, omissions, change of price, rental or other conditions, prior sale, lease or financing, or withdrawal without notice. We include projections, opinions, assumptions or estimates for example only, and they may not represent current or future performance of the property. You and your tax and legal advisors should conduct your own investigation of the property and transaction.



TERESA HARWOOD, CCIM
 Cell: 317.354.5236
 tharwood@kw.com

MORGAN MATHAUER
 Office: 317.455.8111
 Cell: 765.318.8053
 mmathauer@kw.com

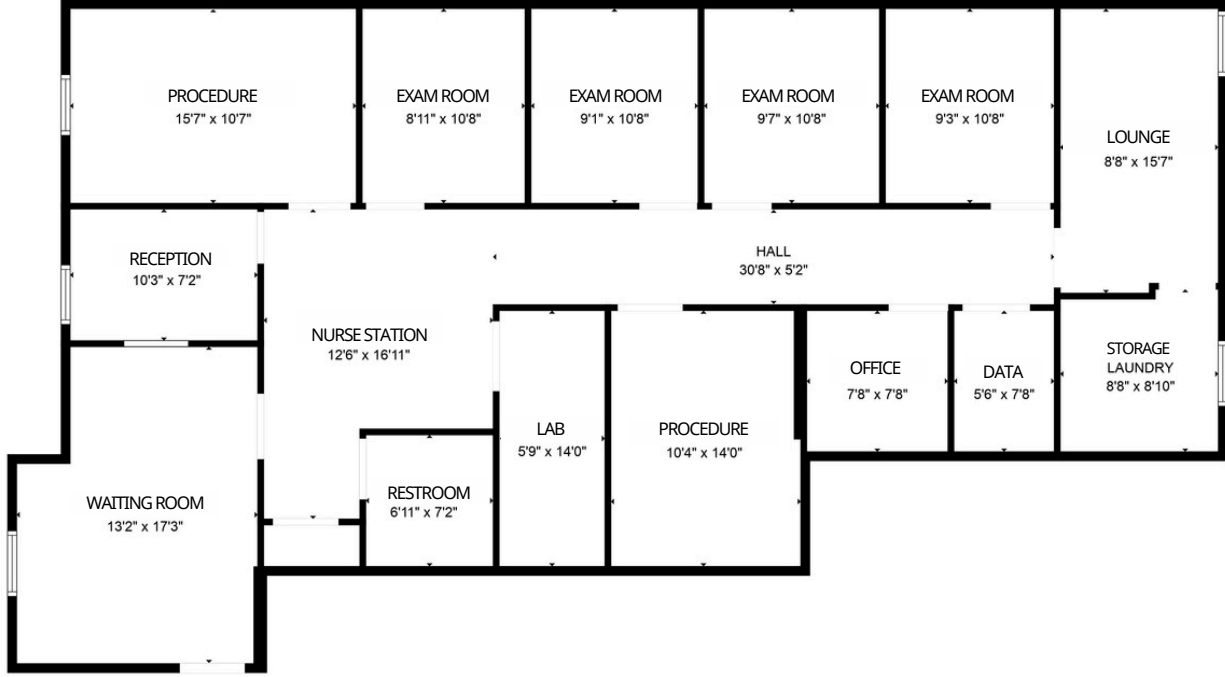
48 N Emerson Avenue, STE 300,
 Greenwood, IN 46143 - United States
 www.harwoodcommercialgroup.com

Suite C

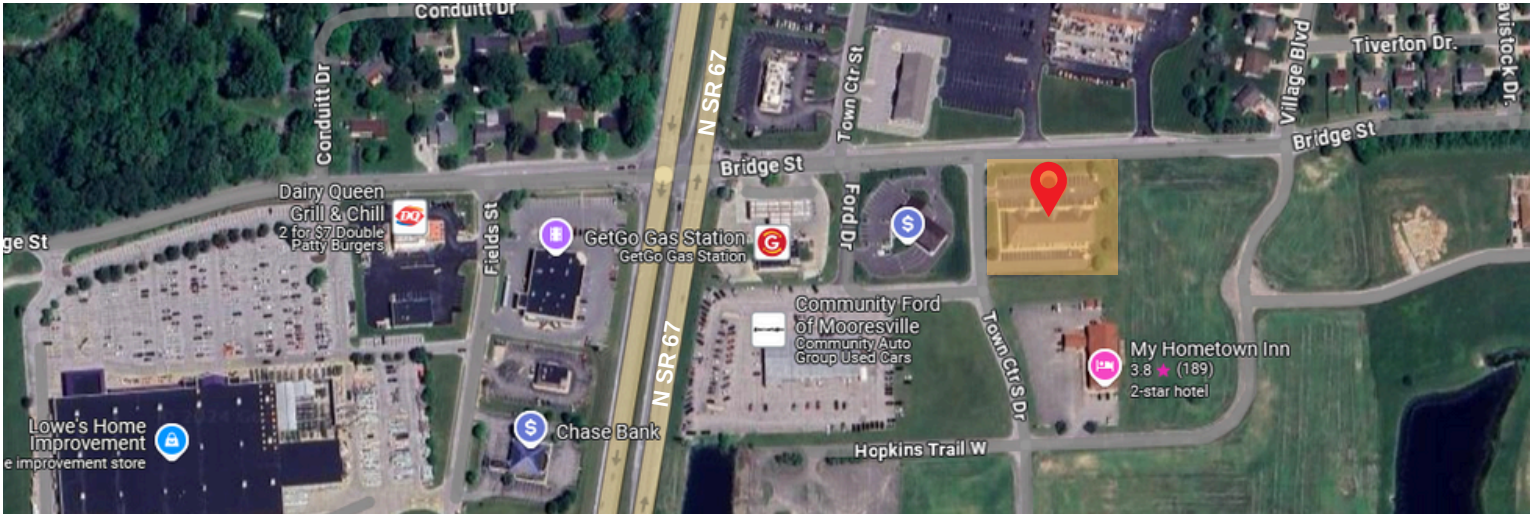
- Size: 2,000 sq. ft.
- Rate: \$15/sq. ft.
- Features: Previously a dermatology office. This space is well-suited for a range of medical specialties or professional services. Move-in ready with exam rooms, reception, and office space configured for efficiency.



Suite C - Floor Plan



LOCATION OVERVIEW



We obtained the information above from sources we believe to be reliable. However, we have not verified its accuracy and make no guarantee, warranty or representation about it. It is submitted subject to the possibility of errors, omissions, change of price, rental or other conditions, prior sale, lease or financing, or withdrawal without notice. We include projections, opinions, assumptions or estimates for example only, and they may not represent current or future performance of the property. You and your tax and legal advisors should conduct your own investigation of the property and transaction.

TERESA HARWOOD, CCIM
 Cell: 317.354.5236
 tharwood@kw.com

MORGAN MATHAUER
 Office: 317.455.8111
 Cell: 765.318.8053
 mmathauer@kw.com

48 N Emerson Avenue, STE 300,
 Greenwood, IN 46143 - United States
 www.harwoodcommercialgroup.com